

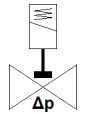
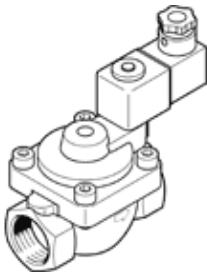
# solenoid valve

## VZWP-L-M22C-N34-250-V-1P4-40

Part number: 1489978

FESTO

Servo-controlled, with piston, NPT3/4" connection.



## Data sheet

| Feature                                 | Value   |
|---|---|
| Design structure                        | Pilot-actuated piston poppet valve  |
| Type of actuation                       | electrical  |
| Sealing principle                       | soft  |
| Assembly position                       | Coil preferably on top  |
| Mounting type                           | Line installation   |
| Process valve connection                | 3/4 NPT   |
| Electrical connection                   | Plug pattern type A to EN 175301-803<br>Plug<br>to EN 175301-803<br>Cubic design                                    |
| Nominal size                            | 25 mm   |
| Valve function                          | 2/2 closed, monostable  |
| Manual override                         | None  |
| Flow direction                          | non reversible  |
| Medium                                  | Compressed air in accordance with ISO8573-1:2010 [7:4:4]<br>Inert gases<br>Neutral fluids<br>Other media on request |
| Nominal pressure of process valve       | 40  |
| Differential pressure                   | 0.5 bar   |
| Characteristic coil data                | 24 V DC: 6.8 W  |
| Insulation class                        | H   |
| Permissible voltage fluctuation         | +/- 10 %  |
| Duty cycle                              | 100 %   |
| Type of piloting                        | Piloted   |
| Medium pressure                         | 0.5 ... 40 bar  |
| Max. viscosity                          | 22 mm <sup>2</sup> /s   |
| Medium temperature                      | -10 ... 80 °C   |
| Ambient temperature                     | -10 ... 35 °C   |
| Leak rate in accordance with EN 12266-1 | A   |
| Flow rate Kv                            | 8.2 m <sup>3</sup> /h   |
| Standard nominal flow rate              | 8,750 l/min   |
| Switching time on                       | 130 ms  |
| Switching time off                      | 300 ms  |
| Materials note                          | Contains PWIS substances<br>Conforms to RoHS  |
| Material housing                        | Cast brass  |
| Material number for housing             | CW617N  |
| Material seals                          | FPM   |
| Material screws                         | High alloy steel, non-corrosive   |
| Material number, screw                  | 1.4301  |
| Product weight                          | 1,500 g   |
| Protection class                        | IP65  |
| Corrosion resistance classification CRC | 1 - Low corrosion stress  |