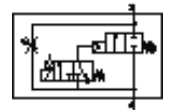
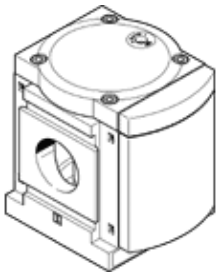


soft-start valve MS12-DE-G-V24

Part number: 541498

FESTO

To slowly pressurise and exhaust pneumatic equipment



Data sheet

Feature	Value
Exhaust-air function	throttleable
Type of actuation	electrical
Assembly position	Any
Manual override	detenting Pushing
Design structure	Piston seat
Type of reset	mechanical spring
Type of piloting	Piloted
Pilot air supply	Internal
Flow direction	non reversible
Valve function	2/2
Switching position indicator	with accessories
Operating pressure	3 ... 16 bar
Standard nominal flow rate	25,000 ... 42,000 l/min
Duty cycle	100 %
Characteristic coil data	24 V DC: 8.4 W 42 V AC: 50 Hz, pick-up power 14.0 VA, holding power 10.0 VA 42 V AC: 60 Hz, pick-up power 12.0 VA, holding power 7.0 VA
Operating medium	Compressed air in accordance with ISO8573-1:2010 [-:~:]
Corrosion resistance classification CRC	2 - Moderate corrosion stress
Medium temperature	-10 ... 50 °C
Protection class	IP65
Ambient temperature	-10 ... 50 °C
Product weight	3,800 g
Electrical connection	Per DIN EN 175301-803 Cubic design
Signal status display	with accessories
Mounting type	Line installation with accessories Optional
Pneumatic connection, port 1	Manifold module
Pneumatic connection, port 2	Manifold module
Materials note	Free of copper and PTFE
Material seals	NBR
Material housing	Aluminium die cast